



THE MONARCH

Coastal Prairie Quilt Guild of Texas

Volume 3, Issue 1
SEPTEMBER 2010



CPQG QUILT SHOW COUNTDOWN

12 DAYS

GUEST ARTIST: CYNTHIA ENGLAND

GUEST MEMBER ARTIST: Esther Mirti

Inside this issue:

Programs	3	Meeting Minutes	6
Financials	4	Bees	3
Membership	7	Sew Much Fun	5
Workshops	5	Show and Share	8
Quilts FTH	9	Quilt Show	10
		Night Meeting	12
		Cynthia England	11

NIGHT MEETING: Wednesday, Sept 1

SPEAKER: Cynthia England

DAY MEETING: THURSDAY, September 16th.

Ramona Williams—Quilts With An Attitude

Meetings will be at the

**First United Methodist Church of Missouri
City**

Located at the corner of Lexington and FM 1092 (Murphy
Road)

DESPERATELY NEEDED FOR THE QUILT SHOW....

50 dozen homemade cookies—any kind, any size

We would love to put a dozen cookies into each vendor welcome/thank you box. When the vendors check in at the Stafford Centre on Thursday, we will give them a box of goodies as a way of thanking them for supporting the show. If you can help us, please package your cookies, one dozen to a package, and drop them at the church on Tuesday, September 7, or Wednesday, September 8. We will be there, at the small chapel door, between 9am and 2 pm each of those days. Please send me an e-mail at the following address to let me know that you can help and how many packages you might be able to bring—remember 1 dz. to a package. If lots of you will help we would be most appreciative. E-mail Karen at:

kshively@entouch.net

PLANTS—PLANTS—AND MORE PLANTS!!!!!!

We need plants, potted plants, anything from a 10” height to a couple of feet high, or a pretty drapery ivy is good too. We need nearly 100 plants to decorate our show. You may drop them off at the Stafford Centre on Thursday Sept 9th between 8am—3pm and pick them up at the close of the show on Saturday Sept. 11th at 5pm. Please help us with this effort. Again, e-mail Karen and let her know that you can bring plant(s) and how many you will be bringing. The pot needs to be clean—not fancy!

PLEASE JOIN IN AND HELP FILL THESE

PROGRAMS

Carol Bell/ Veronica Rutenberg

SEPTEMBER 1. Our September evening speaker will be **CYNTHIA ENGLAND**. We are honored to present to you our guest artist for the quilt show. She will bring some fantastic award winning quilts for you to see. Don't miss the chance to interact with this very famous quilter! We are very lucky to have her!

SEPTEMBER 16. Our September day speaker will be **RAMONA WILLIAMS**. Ramona's topic will be "Quilts With An Attitude", starring your favorite jelly rolls. Ramona is a local Missouri City resident and teaches, and entertains, at Quakertown Quilts.

OCTOBER 6. Our October evening speaker will be **Nova Montgomery**. Her lecture is "A Century of Progress ". In this program Nova takes you back in time to see the background in our country leading up to the 1933 World's Fair in Chicago. Learn the factors leading up to the great participation in the quilt category, the people who participated, and the quilts entered into the fair.

OCTOBER 21. Lisa Maki from "On Points Designs" will be our daytime speaker.

BEES

by Elizabeth Barrow and Barbara Penning

BEE NEWS: My thanks to all the bees who have provided baskets for our guild show. I am amazed at the beauty and contents of all the baskets that I have seen. There will be about 25 baskets for you to try to win. Enjoy !!!!

Next year your Bee Coordinator will be Mary Lou Cooper. Look forward to a great year with her.

GREAT NEWS!

For those of you who wanted to join Cynthia England's landscape class during the quilt show but couldn't participate on Friday—Cynthia is opening some seats in her Saturday class to students wishing to do a landscape quilt. **SIGN UP AT THE NIGHT MEETING!**

FINANCIAL REPORT—*as of* JUNE 31, 2010 by Sharon Blifford

Income YTD	\$29,526.00
Expense YTD	\$19,194.40
Net Income YTD	\$10,331.60
Checking Account Balance	\$13,724.98

DATES TO REMEMBER

Sept 1, 2010	7pm	CPQG Evening meeting—Cynthia England
Sept 9, 2010	8-5pm	Stafford Centre Quilt Show Set-Up
Sept 10, 2010	8am—7pm	Binding Borders Around the World Quilt Show
Sept 11, 2010	9am—5pm	Binding Borders Around the World Quilt Show
Sept 16, 2010	10am	CPQG Morning meeting—Ramona Williams
Oct. 6, 2010	7pm	Evening meeting—Nova Montgomery
Oct. 21, 2010	10am	Morning meeting

THE QUILTING DIVA

Karen Shively

Hm: (281) 778-5965 Cell: (832) 693-2512

kshively@entouch.net

Edge to Edge Patterns Freehand—Heirloom

T-Shirt/Photo Quilts Computer Guided Designs

Quick turn-around



AWARD WINNING MACHINE QUILTING

WORKSHOP NEWS

by Carol Bell for Carol Ann Barley

All Workshops are from 1-4 in the music room., so you have time for lunch. We must enter and exit through the front door-do not go through the school area.

SEPTEMBER 16 —Workshop with Ramona Williams. \$25 includes the quilt pattern. Please sign up early. There is some homework you need to accomplish before taking this class. Look for the quilt you will be working on to be displayed at the meeting. The star blocks can be these stars, a plain charm square or a fussy cut piece of fabric. Make it as easy or as hard as you want. What a terrific little quilt!



SPECIAL ANNOUNCEMENTS

9-11 EXHIBIT AT COASTAL PRAIRIE QUILT SHOW

Be sure to visit the 9-11 exhibit at the Quilt Show!!!

"SEW" MUCH FUN

by Linda Gremillion & Sandy Winston

We have finished our mystery quilt and I am hoping that we can have a good show and tell in Oct. I will be passing out a survey to see what people want this coming year; I have some new idea's that I'm hoping every one likes. No mystery this year maybe another.

WORDS FROM THE SECRETARY*by Candy Horsley*

COASTAL PRAIRIE QUILT GUILD MEETING, August 19 2010

The meeting was called to order at 10:09 am by President Nancie Roach at the First United Methodist Church of Missouri City.

Motion was made by Linda Gremillion, seconded by Sandi Winston, and passed to accept the treasurer's report and minutes of the July meeting. There were no opposed.

Announcements –

Visitors were welcomed by Sharon Kralj.

Sharon Kralj moved and Trena Stevens seconded a motion to accept the slate of new officers. The motioned passed with no opposed.

The September Board meeting will be held on Tuesday, the 14th, at the Keegans Wood Community building at 1:00 pm.

The next night meeting is September 1st.

Nancie went over the procedure for today's program. Members will rotate between 4 demonstration tables and voting on the mini quilts.

Crosby Quilt guild had raffle quilt on display.

Committee Announcements –

Karen Shively - Quilt Show – Information was shared about Cynthia England's workshop signup. A chart was available for volunteers to sign. Karen went over descriptions of jobs. We should try to wear red shirts. Karen also discussed tickets, security, food, volunteer door prizes, plants as decorations, and procedures for handling the quilts. Members were urged to support the vendors.

Linda Gremillion – Activities – “Crowns of Glory”, the church donation quilt, was presented. Linda thanked all who worked on it. It will be given to the First United Methodist Church of Missouri City.

Linda Fletcher – Show & Tell – Linda Gremillion showed Sharon Kralj's mystery quilt. Seven other items were shared, as well as some of the pillowcase dresses being donated to a local charity.

Program – There was no speaker, members rotated around the room every 15 minutes, stopping at stations to learn about battings, crayon appliqué, ruching and yo-yos, appliqué, and to vote on the mini quilts donated for the auction at the September show.

Ways and Means – Barbara Penning won the donation quilt, Oriental Garden.

Mini Quilt Auction – Carol Kettlewell – Winners of the vote on the mini quilts was announced and prizes awarded. Esther Mirti won 'workmanship', Candy Horsley won 'best theme', Carol Bell won 'favorite', and Shirley McCaddon won 'also liked'.

Door prizes – Seven prizes were awarded.

President Nancie Roach adjourned the meeting at 12:25 pm. A potluck lunch was shared following the meeting.

Minutes submitted by Candy Horsley, secretary. cphorsley@gmail.com

NEWSLETTER*by Karen Shively*

The Monarch is published monthly by the Coastal Prairie Quilt Guild of Texas. It is distributed via e-mail free to members. News items, articles, and suggestions are always welcome; submissions will be subject to space considerations. **DEADLINE:** Articles must be received by the Monday following the Thursday morning meeting for inclusion in the following month's newsletter. Send articles to Karen Shively at kshively@entouch.net. If you do not have e-mail capability, legibly written information will be accepted by the deadline. **ADDRESS CORRECTIONS:** US mail address corrections should be sent to Barbara Baxter, VP Membership, twobs@comcast.net. E-mail address corrections should be sent to Barbara Baxter with a cc to and Karen Shively.

MEMBERSHIP*by Barbara Baxter***New Approach From Jo-Ann's Regarding VIP Discount Card**

For the past two years, I have passed out Jo-Ann's VIP Discount Cards to renewing members. This year Jo-Ann's is taking a new approach. They are interested in improving the distribution process so that they quickly and efficiently fulfill all requests.

The new Jo-Ann VIP Discount Card is valid from 8/1/10 to 8/31/11, The VIP Card can be used for 10% off your total purchase, including regular and sale priced items. For in-store purchases, the Jo-Ann 40% off regular priced item coupons can be used in the same transaction as the VIP Card 10% total purchase discount, although the 10% would not apply to the item that receives the 40% discount. For online orders, the VIP discount cannot be combined with any other offer. The Discount Card is valid at any Jo-Ann store, and is also valid online at www.Joann.com by using the promotion code supplied on the back of the card.

Members must now request their own card online at www.joann.com/VIP. For members who do not have Internet access, you can phone in your information to 877-604-2280

IT'S MEMBERSHIP TIME AGAIN!!! PLEASE BE SURE TO RENEW BY OR BEFORE SEPTEMBER 1ST!

Another year has quickly passed and it is now time to start membership renewals. I will have membership forms at the August meeting or you can find a copy of the form at the CPQG website. Yes, you will need to fill out the form so that I can keep the database up to date with all of your current information. Please print your e-mail address carefully so that I can read it. The dues are \$25. Please make your check out to CPQG and cash is always acceptable. Consider checking some areas of interest at the bottom of the form and become more involved with the guild activities.

SHOW AND SHARE

by Linda Fletcher

At our August Night meeting we saw:

Lill Hathorn	Folded Fabric Blocks
Joyce Jackson	Return to Down Under
Carol Kettlewell	Forever in Love
Susie Doe	Red, White & Blueberry
Susie Doe	Summer at the Pond
Susie Doe	Dichonic Bling
Susie Doe	10 Years of Sishiness
Susie Doe	Ephrata Challenge
Susie Doe	Pink Ribbon Quilt
Mark Towle	VIL Memories

We saw some beautiful projects at our August day meeting:

Barbara Baxter	Bouquet for a New Day--My Way
Barbara Baxter	Bo's Place
Penny Stanaford	Little Dresses
Penny Stanaford	Bo's Place (quilted by Karen Shively)
Lill Hathorn	Mystery Quilt #1
Lill Hathorn	Mystery Quilt #2
Lill Hathorn	3D folded blocks

We will have Show and Share at both September meetings, however we also look forward to seeing your creations in the CPQG Quilt Show!

CPQG DONATION QUILT 2009-2010



**PLEASE BRING YOUR MONEY
OR UNSOLD TICKETS TO THE
SEPTEMBER 1ST MEETING.**

THANKS!!!!

DOOR PRIZES / REPRESENTATIVE AT LARGE*by Carole DeGruy*

This is the time for us to turn over our responsibilities to someone else. Evelyn Coe will be the new Rep-at-Large. She will be the one to go to if you have any suggestions, questions, and of course the all important door prizes to donate. I have enjoyed greeting you at the door for each meeting and getting to know you. I would like to thank Evelyn for accepting the nomination for this position and sincerely hope she enjoys it as much as I did.

Don't forget to bring any of your extra goodies or unwanted notions to our meetings to be shared with a lucky quilter. See you at our next meeting.

QUILTS FROM THE HEART*by Auian Ward*

We are all excited about our quilt show and looking forward to seeing all the beautiful quilts.

QFTH will not meet for the **First Wednesday Bee**. Enjoy your Labor Day weekend and we will regroup for October after the show.

Some of you have expressed an interest in piecing the **Bo's Place** quilt tops. Please send me an email if you have not already contacted me.

Please consider joining us at the **HEB Sew Outing** on the **fourth Wednesday** of the month--located at Hwy 6 and Sienna Parkway--10:00-3:00. During our last meeting, we made "**exploding pineapple**" blocks. Be looking for kits for this block for our charity quilts in the future.

We can always use any usable extra fabric you choose to donate. We will have a booth at the show, so come by and see what we are doing and make plans to join us in the future.

Happy quilting, 😊

Auian

More info to come in the next newsletter about QFTH happenings.



**COASTAL PRAIRIE QUILT GUILD
QUILT SHOWCASE**

SEPTEMBER 10-11, 2010 STAFFORD CENTRE

MARK YOU CALENDAR! SAVE THE DATES!

QUILT SHOW COMMITTEE MEETING

Monday, August 30, 1pm

QUILTERS COTTAGE, RICHMOND

We need lots of help and many more leaders to pull this off. If you would like to get involved please try to come to this meeting.

CYNTHIA ENGLAND

GUEST ARTIST

“BINDING BORDERS AROUND THE WORLD” QUILT SHOWCASE

SEPTEMBER 10-11, 2010

STAFFORD CENTRE, STAFFORD TEXAS

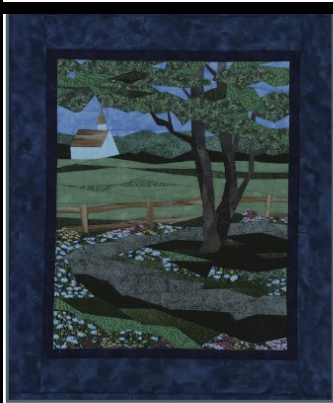
Brand new Janome machines are being supplied by
QUILTERS EMPORIUM for these classes.

PRE-REGISTER FOR THE FOLLOWING CLASSES OFFERED AT THE QUILT SHOW
EXPERIENCE THE OPPORTUNITY OF LEARNING FROM THE TALENTED CYNTHIA ENGLAND

You may register at the CPQG Meetings or by calling

Karen Shively 832-693-2512

Limit 20 per class—first come first served No Refunds



17" X 19" Country Road



17" X 19" Season's End

MORE SPACES ADDED FOR THOSE WHO
WANT TO PARTICIPATE ON **SATURDAY** IN A
LANDSCAPE CLASS.....

**FRIDAYS CLASS IS FULL
CHOOSE FROM TWO
DIFFERENT LANDSCAPE
DESIGNS**

Supply list will be available at
time of registration

SATURDAY, SEPTEMBER 11, 1PM \$50.00 INCLUDES ALL SUPPLIES



CHOOSE FROM EITHER PANSEY OR ROSEBUD DESIGNS \$50.00 INCLUDES ALL SUPPLIES

Supply list will be available at time of registration

**CPQG ADDS A SECOND
MEETING
NEXT EVENING MEETING
SEPTEMBER 1 AT 7PM**

**SPEAKER:
CYNTHIA ENGLAND
OUR GUEST ARTIST FOR THE QUILT SHOW
INTRODUCES YOU TO HER LOVE OF
QUILTING!**

**DUE TO MANY REQUESTS WE WILL ENJOYING
OUR FIFTH *EVENING* MEETING ON
SEPTEMBER 1, 2010.**

(All Evening Meetings will be held the First Wednesday of each month.)

TIME: 7:00 –9:00 pm (Social time begins at 6:30 PM)

WHERE: FIRST UNITED METHODIST CHURCH on Lexington at Murphy
Road (FM1092)

Enter at the side portico and walk straight down the hall to the
Fellowship Hall—on your left toward the end of the hall.

Coastal Prairie Quilt Guild of Texas

on

Phone: 281-778-5965

www.cpqg.org

UPCOMING EVENTS OF "QUILT"
INTEREST

Be sure to check out our
FABULOUS!!! website
for a complete listing of upcoming events of
special interest to quilters!



<http://www.cpqg.org/UpcomingEvents.html>

IMPORTANT INFORMATION FOR YOU

Although we are continuing to produce this newsletter please use our website for your primary reference regarding what is current and exciting at Coastal Prairie Quilt Guild. The website is updated regularly and contains all of the information found in the newsletter plus pictures and more. It gives you access to all board and committee members, to the online library, and to the picture gallery with just a click of your finger. The website should be your FIRST source for information.

www.cpqg.org