



The Monarch

Coastal Prairie Quilt Guild Of Texas

Volume 3, Issue 9

May 2011

From the desk of *Candy Horsley*

LABEL YOUR QUILTS!! This very important and often neglected aspect of making a quilt was reinforced by both of our April speakers. Marcia Kaylakie and Carolyn Springer both have careers that involve antique quilts, and both stressed the importance of knowing the history of each quilt.

The label should have:

- ✂ your name,
- ✂ the date you finished the quilt,
- ✂ your city and state.
- ✂ the name of the quilt
- ✂ any interesting information you can add, for example, who you made it for, can aid future historians.

Just think, the quilt you are working on today may be featured in a book 100 years from now, but only if the author can document the maker – you! Of course, **if someone quilted it for you, her name should be included on the label also.**

This is leading up to the 2012 Show. (You saw this coming, right?) I hope that you are thinking about your quilt for our show in September of 2012.



I know some of you have already begun. I can just see a book in the future that contains only quilts from CPQG Shows - so be sure your label says that it was made for the show.

Remember

- Bring one guest to one meeting,
- 2012 Show quilt,
- Please do one thing to help Quilts From The Heart.

Inside this issue:

QFTH	2	Financials	6
Bees	3	Programs	7
Spotlight	4	Library	7
Dates to Remember	4	Workshop	8
Minutes	5	Activities	9

NIGHT MEETING: Wednesday, May 4th
Pay it forward—Quilts from the Heart Gathering

DAY MEETING: Thursday, May 19th
Liz Broussard

Quilts from the Heart by *Auian Ward*

We have several projects that you can help us complete:

1. Calling all quilters. We have more quilts being pieced than we can get quilted. Won't you take one or two to quilt?
2. Kits with **tubes** and **strips** are available to help with quick construction. To make this happen, please follow the directions in the kit and return the work with the instructions in the bag it was packed in. We can use them again.
3. I have a number of **Bo's Place** packets available. These may be completed with fabric you choose or if you need fabric to complete them, we will supply it.
4. Returning completed projects in a timely fashion is greatly appreciated.



Check the website for days, places, and times for Quilts from the Heart meetings. We always have a fun time working together.

Owner: **Rose Ann Cook**
rcook@quiltersemporium.com
www.quiltersemporium.com

Putting the pieces together

OPEN 7 Days a Week
 Mon-Sat 10-5, Thu 10-6 & Sun 12-4

The Emporium hosts:

- * Several weekly quilting bees,
- * A monthly Strip Club,
- * Thimbleberries Club,
- * Jo Morton "Little Women" Club,
- * Fabric Showcases,
- * UFO Pajama Parties,
- * A weekly No Quilter Left Behind Program,
- * Several Block of the Month programs are also offered each year.

Authorized Dealer for:

- * Janome Sewing Machines
- * Tin Lizzie Quilting System
- * Authorized Koala Showcase Dealer

11925 Southwest Freeway, Suite 11
 Stafford, Texas 77477
 (281) 491-0016
 (800) 395-7794



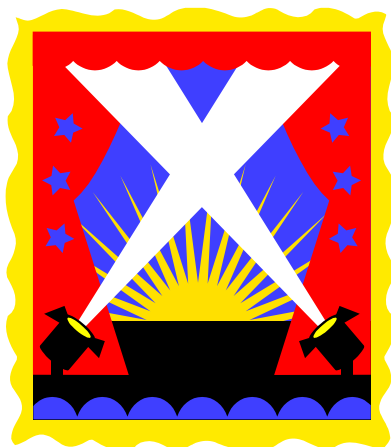
Bees by *Mary Lou Cooper*

<p>Sugar Land Bee Barbara Baxter 281-242-5403 Keegans Wood Community Center Houston Every Tuesday 10 AM—2 PM Bring a lunch</p>	<p>Bayland Quilt Toppers Nancie Roach 713-771-6762 Bayland Park Center 6400 Bissonnet Houston 1st Wednesday 9-1</p>	<p>Pitts Road Piecers Joan Nilsen 281-341-6330 727 Pitts Rd. (off Hwy 90A) Richmond Upstairs at the Fire Station Every Wednesday 10 AM—2PM Bring a lunch</p>
<p>Quilts From the Heart Bee Auian Ward 281-778-8863 cell281-682-9177 American Mini Storage 2604 FM 1092 1st WED 10- 2PM Missouri City HEB HWY 6 at Sienna PKWY 4th Wed 10-3PM</p>	<p>Thursday Bee Esther Mirti 281-575-8408 Quilter's Emporium 11925 S W Fwy Hwy 59, Stafford Every Thursday 1-4:30 PM</p>	<p>New Territory Quilt Group Laura McDonald 281-565-1525 Evelyn Coe 281-565-9813 Ellis Creek Rec Center Sept-May 10AM—11:30 AM 1st Thursday</p>
<p>Sew Busy Bee Barbara Baxter 281-242-5403 Quilters Cottage 920 FM 359, Richmond Every Friday 10—2PM Bring a lunch</p>	<p>Scattered Pieces Bee Donna Pyle donnampyle@hotmail.com Westbury Baptist Church 10425 Hillcroft Houston in Parlor D 11-2PM 2nd Saturday</p>	<p>A+ Bee Peggy Pyle 281-437-7948 First Presbyterian Church 502 Eldridge Rd. Sugar Land Fellowship Hall Every Thursday 6-8:30</p>
<p>Electric Quilt Nancie Roach 713-771-6762 3d Wednesday 9 AM—2 PM Bayland Park</p>	<p>Sugar Land Appliqué Society Quilter's Emporium Last Saturday 10 AM—Noon 11925 S W Fwy Hwy 59, Stafford</p>	<p>Round Robin League Faye Stromatt 281-850-3165 34d Saturday 9 AM—2 PM Sugar Grove Church of Christ</p>



Please call the contact person with your questions about sewing machines and other concerns. Bees are so much fun. We sew, visit, eat and learn from other quilters. The Bees welcome new members.

In the Spotlight by *Mary Lou Cooper*



The Sugar Land Bee began in the 1980's and still meets every Tuesday from 10 AM—2:00 PM in the Keegan's Wood Community Center at 9600 Keegans Wood Drive in Southwest Houston. It is very comfortable with ample room for the 26 members who work on their own projects. Some bring new ones weekly; others work on the same one until completed.

This welcoming group of happy quilters love to share ideas and solve quilting problems. There are many experienced in appliqué and piecing; hand and machine. They inspire each other and members bring "Show and Tell" to share.

There is a monthly potluck luncheon to celebrate that month's birthdays, otherwise most bring lunches to the Bee. Members are known to share some great recipes after the luncheons.

Many great friendships have started in this Bee and they always welcome new members. The Beekeeper is Barbara Baxter 281-242-5403

All CPQG events will be held at the First United Methodist Church of Missouri City, which is located at the corner of Lexington and FM 1092 (Murphy Road) Missouri City, TX .

Dates to Remember

May 6-7, 2011	Quilt Show	Quilters Guild of Arlington
May 27-29, 2011	Quilt Show	Hill Country Quilt Guild
June 3-4, 2011	Quilt Show	Abilene Quilters Guild
June 18, 2011	Quilt show	Wise County Quilt Guild
Sept. 9-10, 2011	Quilt Show	Quilt Guild of Greater Houston

Minutes by *Sandi Winston*

The meeting was called to order at 10:00 am by President, Candy Horsley at the First United Methodist Church of Missouri City.

- ✂ A motion was made by Dorothy Kelly, seconded by Barbara Beck to approve the minutes of the March meeting and the treasurer's report. The motion passed unanimously without discussion.
- ✂ Members were reminded to read the bylaw changes as posted in the newsletter before the vote at the May meeting.
- ✂ The sign in sheet now has a space to record volunteer hours.
- ✂ The QFTH lottery blocks are being made into quilts by Karen Shively for the auction. The money from the sale of these quilts will go to QFTH. QFTH are in need of bright fabrics.
- ✂ Candy asked for a volunteer chairman for the church bazaar to be held on November 12th.
- ✂ An addendum to the directory is now available at the sign in table.
- ✂ Golden Needles of Conroe has their donation quilt on display today.

Carol Bell introduced four guests.

- ✂ At the May evening meeting members will be tying quilts for QFTH.
- ✂ In June Margie Lawrence will tell us about Round Robins and give us details of her retreat house.
- ✂ At the May business meeting Liz Broussard will tell us about using of a fabric line.
- ✂ In June Brenda Padadikas will talk about her Dear Jane quilt.
- ✂ In July we will have our annual shop hop bus trip to quilt shops on the north side of Houston.

Michelle Hudson is teaching trapunto quilting at today's workshop. At the May workshop Liz Broussard will talk about the use of large motifs.

- ✂ The May fat quarter exchange is tone on tone.
- ✂ Joyce Jackson is finalizing the volunteer schedule for the Lanier Junior High project.
- ✂ Barbara Baxter has donated a quilt to be sent to NQA for their auction.

We had the largest show and share program ever today! Sixteen people shared their wonderful quilts with us.

After the break the birthday prize and four door prizes were awarded.

A motion by Veronica Rutenberg, seconded by Michelle Hudson to adjourn the meeting passed unanimously without discussion.

Veronica Rutenberg introduced Carolyn Springer of Quilts from Mulberry Lane. Cynthia gave a trunk show of antique quilts from her personal collection.

Sandi Winston, secretary
skwinston@comcast.net

Financials by *Barbara Baxter*

Fiscal Year to Date (April – May 2011)

Fiscal Year to Date Income	\$28,904.14
Fiscal Year to Date Expense	\$21,155.29
Balance of Checking Account	\$22,037.66

CPQG is now on Facebook! Have you check us out? If not, now is your chance to see what's new and interact with each other on the internet.

Here's a hyperlink that will take you to [CPQG on Facebook](#). While your on Facebook, remember to "like" us, look at the photos and add some if you like. Get involved with YOUR quilting guild by joining in the discussions. You can also post that favorite recipe you used for the December luncheon. I'm looking forward to seeing you there!

THE QUILTING DIVA

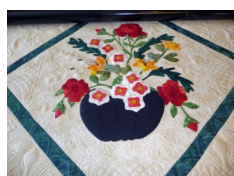
Karen Shively

Home: (281) 778-5965

Cell: (832) 693-2512

kshively@entouch.net

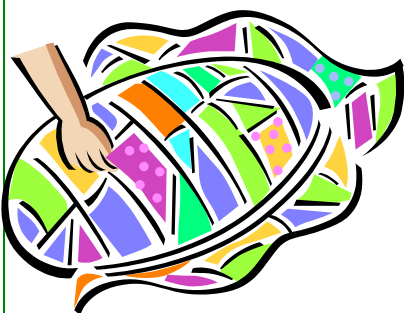
- Edge to Edge Patterns
- Freehand—Heirloom
- T-Shirt/Photo Quilts
- Computer Guided Designs



- Quick turn-around
- Award Winning Machine Quilting

Programs

May 4th: This is our night to help Quilts from the Heart. We will tie quilts that are completed and ready for quilting. If you have never tied a quilt before this is an



opportunity to learn how it is done. Bring your scissors and needle. We will supply thread and needles if you do not have the large eye

needle for tying. Come and enjoy the company of other quilters while helping our hard working Quilts from the Heart group get quilts ready to give to those in need! **BRING A DISH TO SHARE: FINGER FOOD!**

May 19th:

Have you ever walked into a quilt store, felt excited by the fabulous fabrics but were a bit overwhelmed? Let's explore the design possibilities of the fiber



feast to gain more confidence whether you are staring at the material in the store or in your quilting closet!

Liz Broussard will be talking about designing from fabric and she will follow through with this theme in the workshop.

Library News by *Linda Towle*

Setting Solutions by Sharyn Craig

Do you have a favorite block? Do you need some new ideas to use that block? Have you participated in block exchanges or have orphan blocks you would like to do something with? If so, then this is the book you need to borrow from our library. This book will help you think outside the box. There are many more choices than straight or diagonal set, sashing or no sashing! The author shows how to use coping triangles, coping strips and twisted coping strips. She has suggestions for correcting block sizes, toning down colors you aren't crazy about, using

different sized blocks in one quilt, enhancing blocks using frames, and using alternate blocks to get a totally different look. Tons of great ideas in this book!



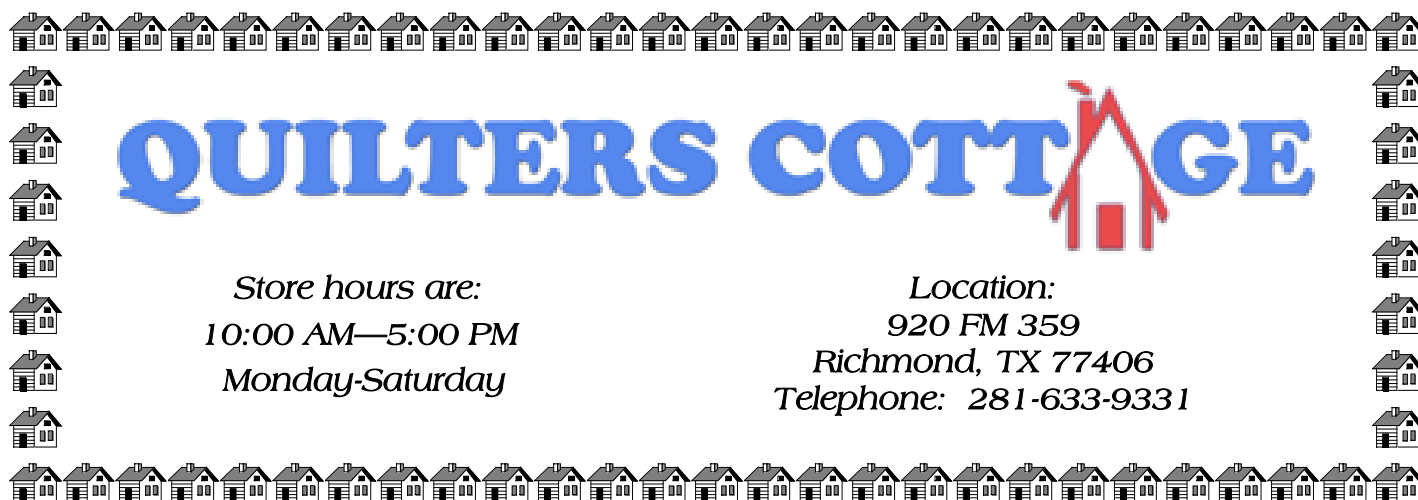
The CPQG library is full of wonderful books. Browse the library at the CPQG website. If you find a book you would like to borrow, send me an e-mail (lktowle@pobox.com - there is a link on our website) and I will bring it to the next guild meeting. I also try to bring 6 to 8 books to each meeting that are available to check out.

Workshops by *Nancie Roach*

May: Liz Broussard will show us how to use some of those “it’s beautiful but what do I do now fabrics you had to pick up.” Workshop will be: *Working with Multi-sized Motifs*. Fabrics with different sized motifs and colors are eye catching but sometimes difficult to use. How do you plan the block size? How do you make the motifs work together? Come learn a method by which each motif is showcased without doing the math for each block! Your quilt will certainly be unique!

From the Church Donation Quilt Committee: Carol Bell and Mary Lou Cooper

A big thank you to all of you who made blocks for the quilt. It was a large project and we couldn't have done it without your help. We are grateful for your time and expertise. Those ladies are: Victoria Agee, Carol Ann Barley, Elizabeth Barrow, Charlotte Betts, Mary Cox, Rita Czervinski, Seema Desai, Susie Doe, Linda Fletcher, JoAnn Gemill, Ann Grant, Sharon Kralj, Esther Merti, Barbara Penning, Peggy Pyle, Nancie Roach, Valerie Whitmer, and Sandra Winston. Also, thank you to Elizabeth Barrow, Carole DeGruy, and Barbara Penning for sewing the quilt together and adding the borders; and Mary Lou Cooper for making the borders and sewing on the binding. These were not small tasks and all the help is greatly appreciated.



QUILTERS COTTAGE

Store hours are:
10:00 AM—5:00 PM
Monday-Saturday

Location:
920 FM 359
Richmond, TX 77406
Telephone: 281-633-9331

Newsletter by *Gwen Goldsberry*

The Monarch is published monthly by the Coastal Prairie Quilt Guild of Texas. It is distributed via e-mail free to members. We are always looking for news items, articles, and suggestions, which will be subject to space considerations. **DEADLINE: Articles must be received by the Monday following the Thursday morning meeting for inclusion in the next month's newsletter.**

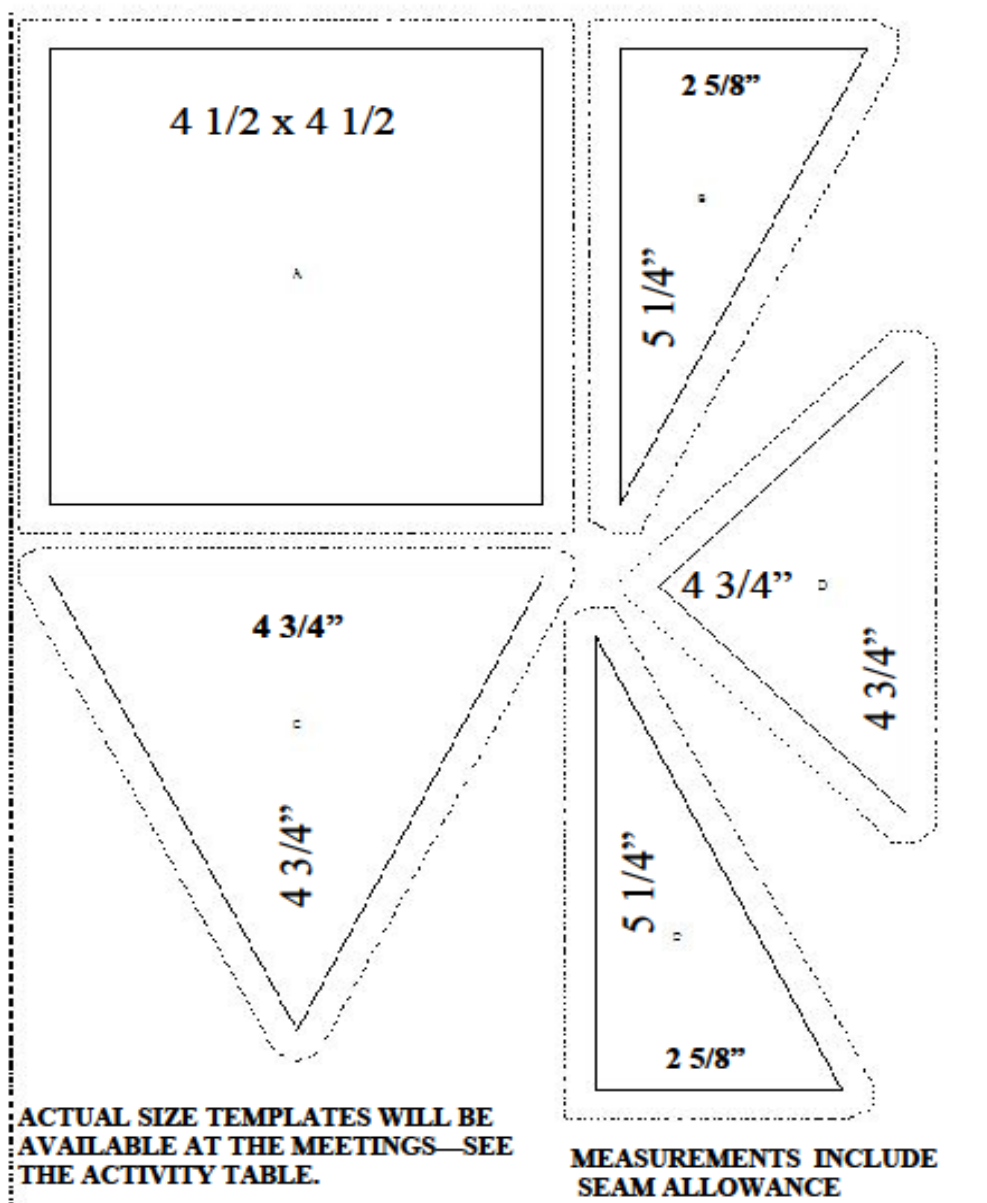
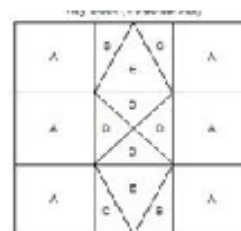
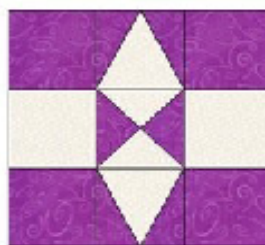
Send articles to Gwen Goldsberry at jbbum1964@hotmail.com. If you do not have e-mail capability, legibly written information will be accepted by the deadline.

Send your [US mail address corrections](#) and [telephone number changes](#) to Carol Kettlewell, VP Membership, rketlew@hal-pc.org. E-mail address corrections should be sent to Carol Kettlewell with a copy to Gwen Goldsberry.

According to the CPQG by-laws, if you need a printed copy of the newsletter, please notify Gwen Goldsberry. A fee applies to all printed copies of **The Monarch**.

Activities by Karen Shively & Judy Yunkers

**June BOM
AMETHYST WITH
WHITE ON WHITE**



Houston Hospice will be holding a workshop on making postcard quilts (4"x6") that will be sold at their office and in their booth at Festival this Fall as one of their fundraisers.

Date: May 25th,

Time: 1 to 4 PM

Location: 1905 Holcombe Blvd., Houston, TX 77030
in the Holcombe House conference room at Houston Hospice

All materials will be provided. Those interested in attending should call **Ruth Landauer** at [713-677-7120](tel:713-677-7120) or Mona Follis at [281-498-4719](tel:281-498-4719) to reserve a spot. Workshop space is limited to 20.

If you already know how to make postcard quilts and want to donate one or more to Houston Hospice, they will welcome each and every one. Please mail them to the above address, to the attention of **Ruth Landauer**.

A Quilting & Craft Retreat for Ladies' Groups



Retreats by Margie

Margie Lawrence
2645 Kallus Road
La Grange, Texas 78945

www.rr-retreats.com
margie@rr-retreats.com
(832) 886-5183

Although we are continuing to produce this newsletter please use our website for your primary reference regarding what is current and exciting at Coastal Prairie Quilt Guild. The website is updated regularly and contains all of the information found in the newsletter plus pictures and more. It gives you access to all board and committee members, to the online library, and to the picture gallery with just a click of your finger. The website should be your FIRST source for information. www.cpqg.org